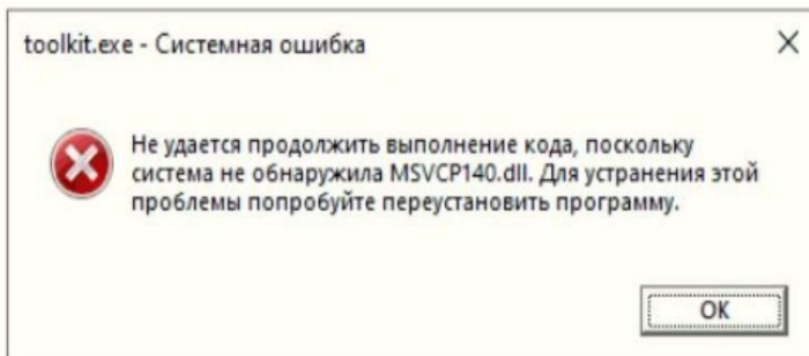


How to Install ROI ASIC FIRMWARE

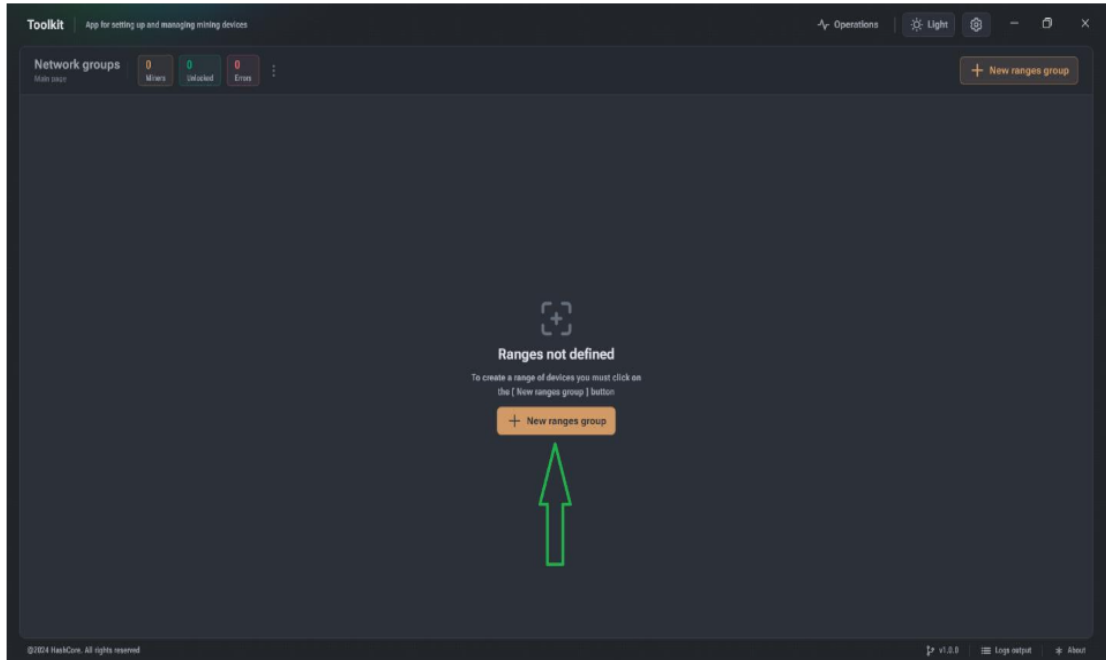
Note: if a library availability error occurs when opening the Toolkit:



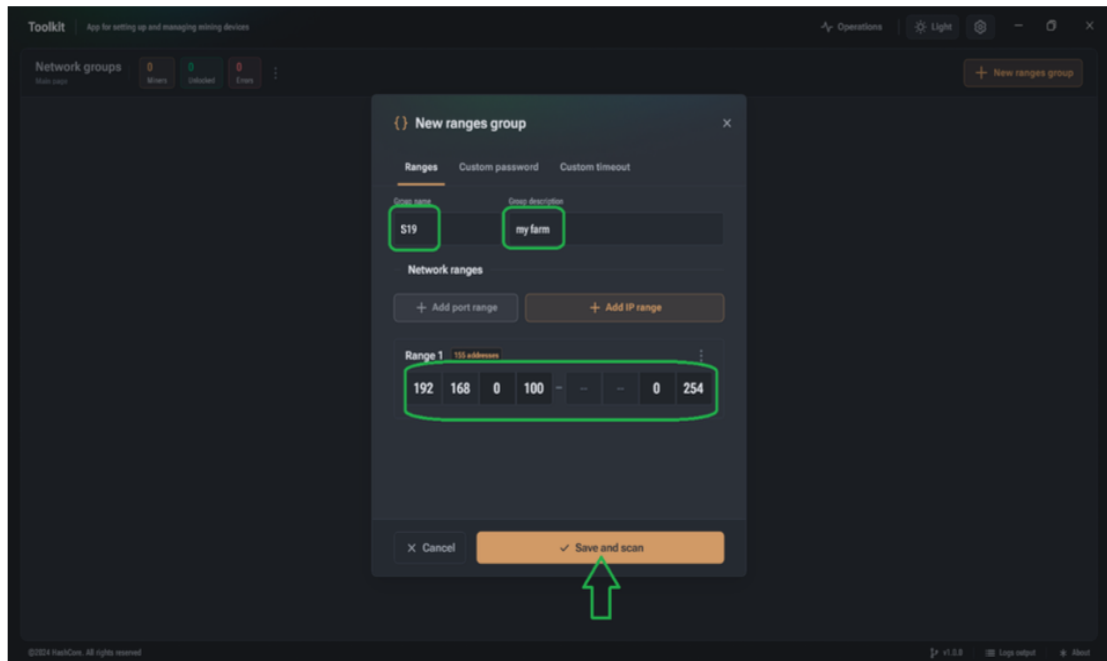
You must install the latest supported versions of the Visual C++ Redistributable component

<https://www.techpowerup.com/download/visual-c-redistributable-runtime-package-all-in-one/>

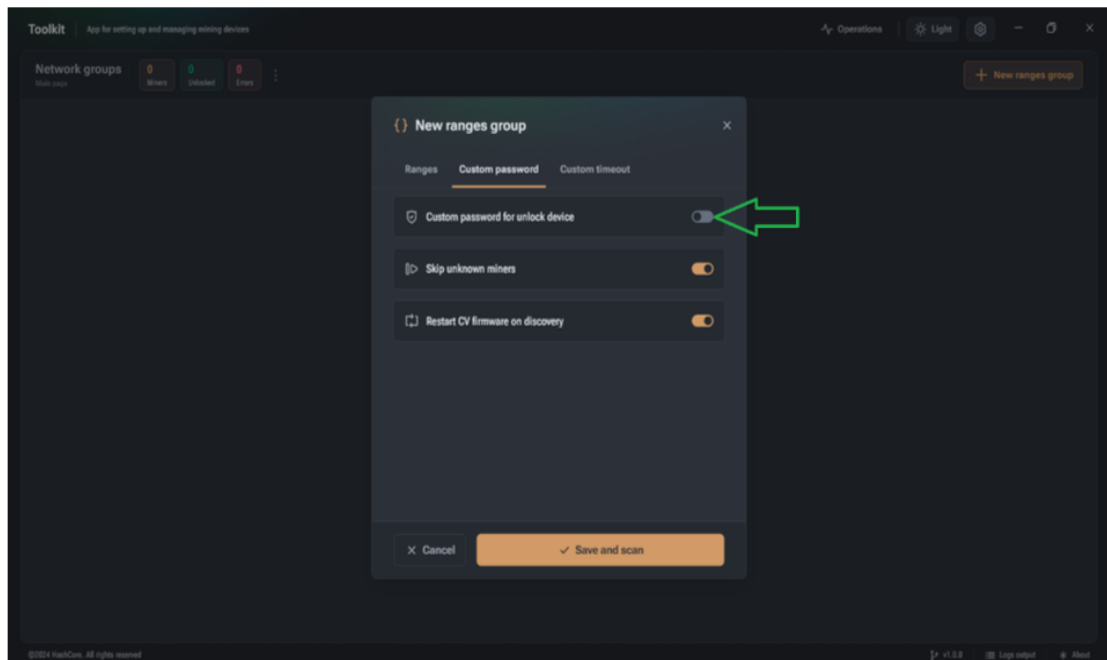
1. Open the Toolkit software .
2. Click on “ New ranges group ” button :



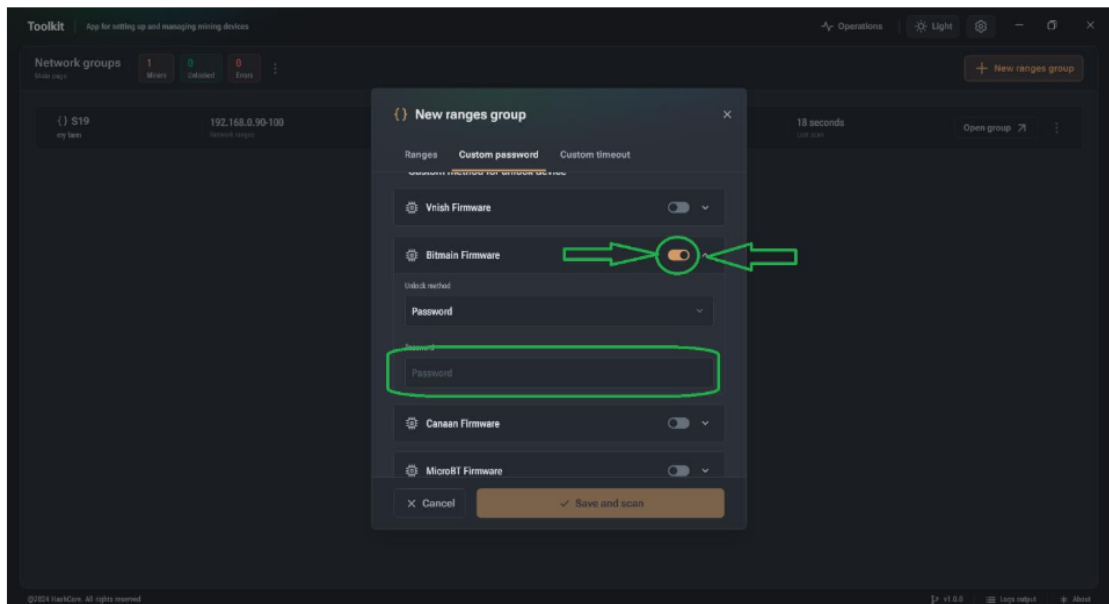
3. Now need to make a group for the IP range
- Choose a name on “ Group Name ” box
 - Put your own description on “ Group description ” box
 - Choose your IP range on range box



- Additional description :
- If you changed the default password (root) , click on “ Custom password ” tab and then enable “ Custom password for unlock device ”

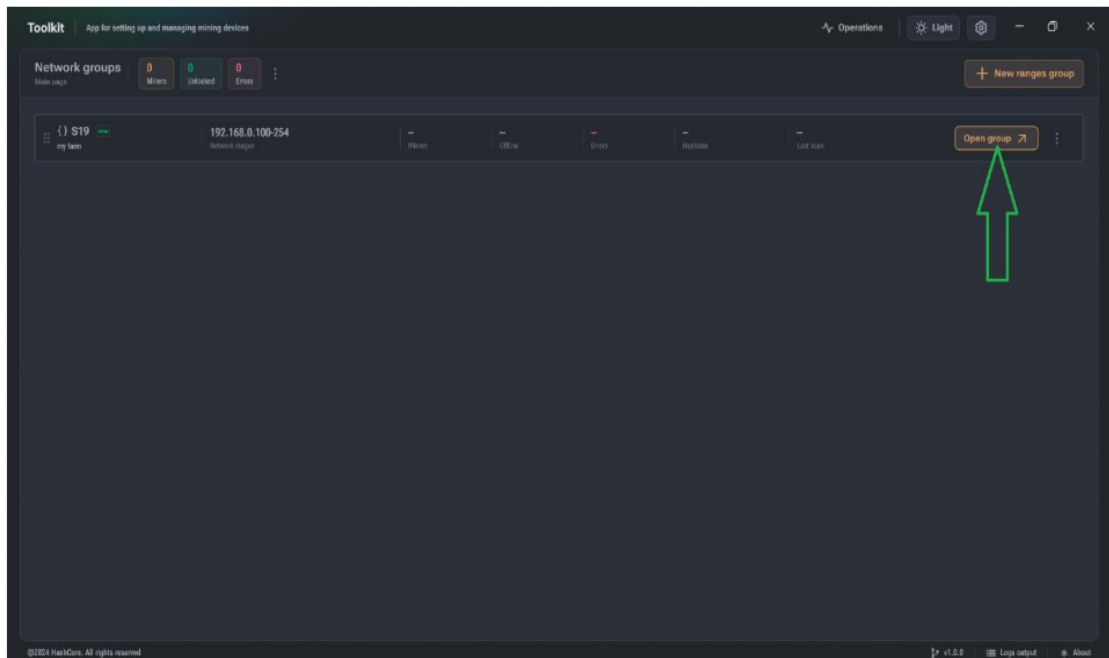


And then scroll down and enable “ Bitmain Firmware ” and click on drop down menu to see the Password . On Password box you can put your miner’s password

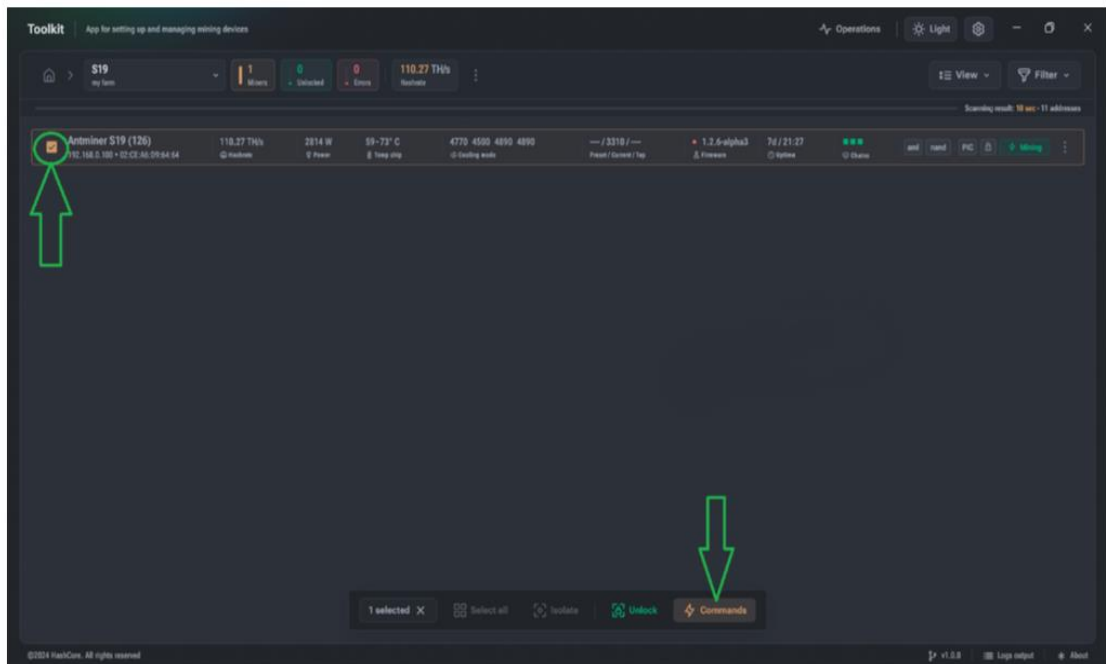


4. Now Click “ Save and Scan ”

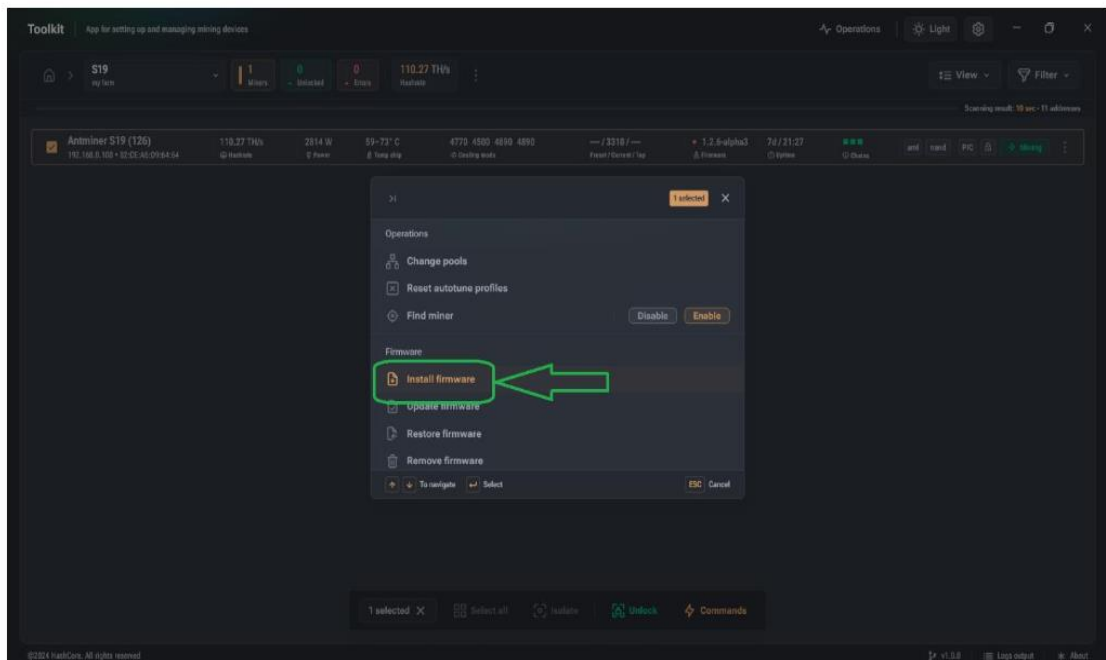
5. Click on “ Open Group ”to see the miners on IP range .



- Now select the miner you want to install Vnish firmware on it and click on “Commands” button :



- On Commands page click on “Install Firmware” button :



8. Then the Install page appears : Click on “ Select ” button to select the the folder where the firmware files will be located (It is necessary to download the nand install firmware files for your model in advance and place them in a folder, the firmware files will not be visible when selecting folders, this is normal) fill the boxes with information like picture below:

Firmware name : roiasic

Firmware Version : 1.2.6

Installing firmware 1 selected X

Firmware directory Not selected **Select**

Firmware install options

Firmware name **roiasic**

Firmware version **1.2.6**

Number of threads 3
Number of threads for install firmware

SSH port 22
Number of threads for update firmware

Miner model
Detect automatically

X Cancel ✓ Install firmware

9. In the "operations" section, you can view the result of the installation process, if any error was made, then the error decryption will be indicated

The screenshot shows the ROI ASIC Toolkit interface. The top navigation bar has a green arrow pointing to the 'Operations' tab. The main panel displays a table of three Antminer S19j Pro devices. The right sidebar shows the 'Installing firmware' progress for the first device, which is 100% complete.

Device	IP address	Device model	Hashrate	Power	Temp	Cooling mode	Power / Current / Temp	Throttle
Antminer S19j Pro	172.16.13.246	Antminer S19j Pro	105.83 TH/s	0 W	50-70° C	Keep skip	Power / Current / Temp	Throttle
Antminer S19j Pro	172.16.13.247	Antminer S19j Pro	105.85 TH/s	0 W	51-71° C	Keep skip	Power / Current / Temp	Throttle
Antminer S19j Pro	172.16.13.248	Antminer S19j Pro	105.84 TH/s	0 W	51-69° C	Keep skip	Power / Current / Temp	Throttle

Operations
Task history, total operations: 1

Installing firmware

172.16.13.246

12:20 August 06, 2024

Waiting: 1 Completed: 0